

13 12 11 10 9 8 7 6 5 4 3 2 1

J J

I I

H H

G G

F F

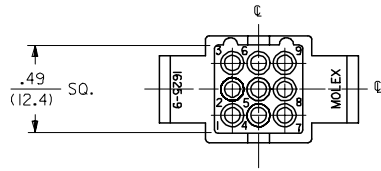
E E

D D

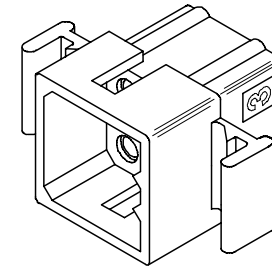
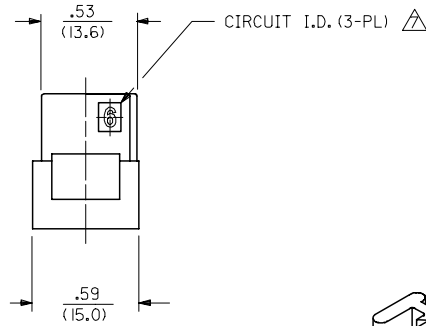
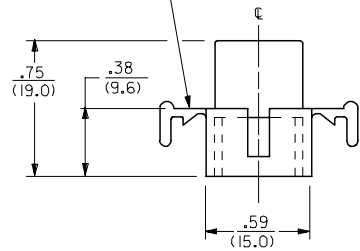
C C

B B

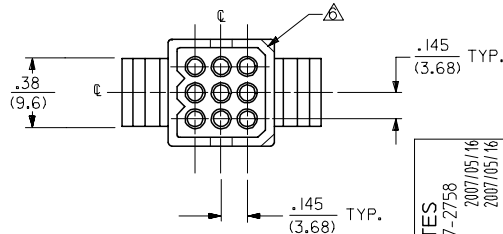
A A



MOUNTING EAR  
(WHEN SPECIFIED)  
SEE DETAIL 3 OR 4  
(2 PL.)



PLUG



3	R
2	R
1	R
SHT. REV.	

<b>UPDATE NOTES</b> EC NO: UCP2007-2758 2007/05/16 DRAWN/PRD/DR 2007/05/16 CHKD:LS/HMT 2007/05/16 APPR:FSM/TH 2007/05/16 REV DESCRIPTION	QUALITY SYMBOLS	GENERAL TOLERANCES (UNLESS SPECIFIED)	DIMENSION STYLE	SCALE	DESIGN UNITS	THIRD ANGLE PROJECTION	
	$\nabla=0$ $\nabla=0$	mm INCH 4 PLACES ± --- ± --- 3 PLACES ± --- ± .010 2 PLACES ± 0.25 ± .014 1 PLACE ± 0.36 ± --- ANGULAR ±1/2°	IN/MM 2:1	INCH	INCH	INCH	
		DRAFT WHERE APPLICABLE MUST REMAIN WITHIN DIMENSIONS	SEE CHART	DRAWN BY DATE JJS 1988/02/05 CHECKED BY DATE RW 1988/02/05 APPROVED BY DATE RAS 1988/02/05 MATERIAL NO. DOCUMENT NO.	TITLE .062/(1.57) HOUSINGS PLUG & RECEPTACLE 9 CKT., .145/(3.68) CTRS	MOLEX MOLEX INCORPORATED	SHEET NO. 1 OF 3
				SIZE C THIS DRAWING CONTAINS INFORMATION THAT IS PROPRIETARY TO MOLEX INCORPORATED AND SHOULD NOT BE USED WITHOUT WRITTEN PERMISSION	SD-1625-9*		

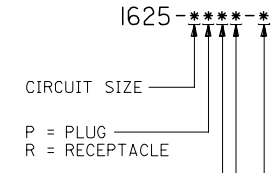
12 11 10 9 8 7 6 5 4 3 2 1

13 12 11 10 9 8 7 6 5 4 3 2 1

PLUG	
PART NO.	ENG. NO.
03-06-2091	I625-9P
03-06-2092	I625-9P1
23-06-2091	I625-9P-C
23-06-2092	I625-9P1-C
04-06-6091	I625-9P1-B
03-06-7091	I625-9PBK
03-06-7092	I625-9P1BK
	<b>OBSOLETE</b>

RECEPTACLE	
PART NO.	ENG. NO.
03-06-1091	I625-9R
03-06-1092	I625-9R1
23-06-1091	I625-9R-C
23-06-1092	I625-9R1-C
03-06-6091	I625-9RBK
03-06-6092	I625-9R1BK
50-36-1871	I625-9R4
50-36-1872	I625-9R4-C
	<b>OBSOLETE</b>
	<b>OBSOLETE</b>
	<b>OBSOLETE</b>

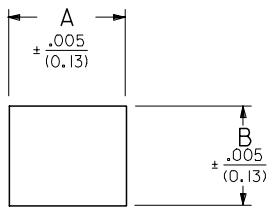
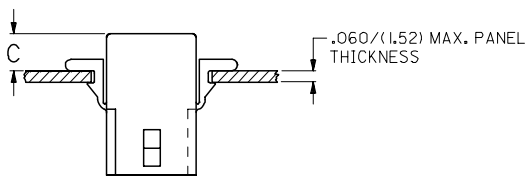
**LEGEND:**



MOUNTING EAR & DETENT COMBINATIONS:  
 BLANK=PLUG OR RECEPTACLE WITH STANDARD EARS  
 1=PLUG OR RECEPTACLE WITHOUT EARS  
 4=PLUG OR RECEPTACLE WITH PREBENT EARS

BLANK = NATURAL COLOR  
 AM = AMBER BK = BLACK BU = BLUE  
 BN = BROWN GY = GRAY GN = GREEN  
 OR = ORANGE RD = RED YW = YELLOW

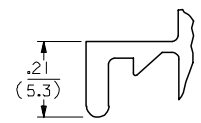
MATERIAL: A = MATERIAL CODE A  
 B = MATERIAL CODE B  
 C = MATERIAL CODE C



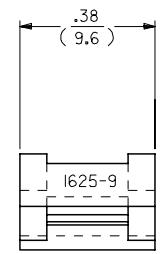
RECEP.	.650 (16.51)	.552 (14.02)	.21 (5.3)	.22 (5.6)
PLUG	.752 (19.10)	.615 (15.62)	.20 (5.1)	.21 (5.3)
PART	DIM. A	DIM. B	DIM. C (STANDARD EAR)	DIM. C (PREBENT EAR)

**RECOMMENDED HOLE PATTERN**

- NOTES:
- MATERIAL CODES:  
 A-NYLON TYPE 6/6, 94V-2  
 B-NYLON TYPE 6/6, 94V-0  
 C-POLYPROPYLENE, 94V-0
  - FINISH: NONE
  - PRODUCT SPECIFICATION: PS-02-06
  - PACKAGING SPECIFICATION: PK-1625-001
  - HOUSINGS OF USE WITH MOLEX .062 DIAMETER TERMINALS.
- △ SOME PARTS MAY HAVE THIS CORNER CHAMFERED.
- △ CIRCUIT I.D. NUMBERS APPEAR ONLY ON TOOLS BUILT AFTER 1992/11/01.
- PARTS CONFORM TO CLASS B REQUIREMENTS OF COSMETIC SPECIFICATION PS-45499-002.



**DETAIL 3**  
 STANDARD MOUNTING EAR  
 (SCALE 4:1)



**DETAIL 4**  
 PREBENT MOUNTING EAR  
 (SCALE 4:1)

ADD 50-36-1871/1872 EC NO: UCP2007-2758 DRAWN/PRD/DR 2007/05/16 CHKD:LS/HMT 2007/05/16 APPR:FSM/TH 2007/05/16 REVISIONS	QUALITY SYMBOLS	GENERAL TOLERANCES (UNLESS SPECIFIED)	DIMENSION STYLE IN/MM	SCALE 2:1	DESIGN UNITS INCH	THIRD ANGLE PROJECTION	
	$\nabla=0$ $\nabla=0$	4 PLACES ± --- ± --- 3 PLACES ± --- ±.010 2 PLACES ±0.25 ±.014 1 PLACE ±0.36 ± --- ANGULAR ± 1 °	DRAWN BY DATE JJS 1988/02/12 CHECKED BY DATE RW 1988/02/12 APPROVED BY DATE RAS 1988/02/12	TITLE	.062/(1.57) HOUSINGS, PLUG AND RECEPTACLE, 9 CKT., .145/(3.68) CTRS		
	DRAFT WHERE APPLICABLE MUST REMAIN WITHIN DIMENSIONS	SEE CHART	MATERIAL NO. DOCUMENT NO.	MOLEX INCORPORATED	SD-1625-9*		
	THIS DRAWING CONTAINS INFORMATION THAT IS PROPRIETARY TO MOLEX INCORPORATED AND SHOULD NOT BE USED WITHOUT WRITTEN PERMISSION			SHEET NO. 3 OF 3			

12 11 10 9 8 7 6 5 4 3 2 1